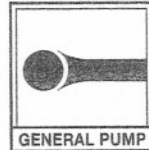


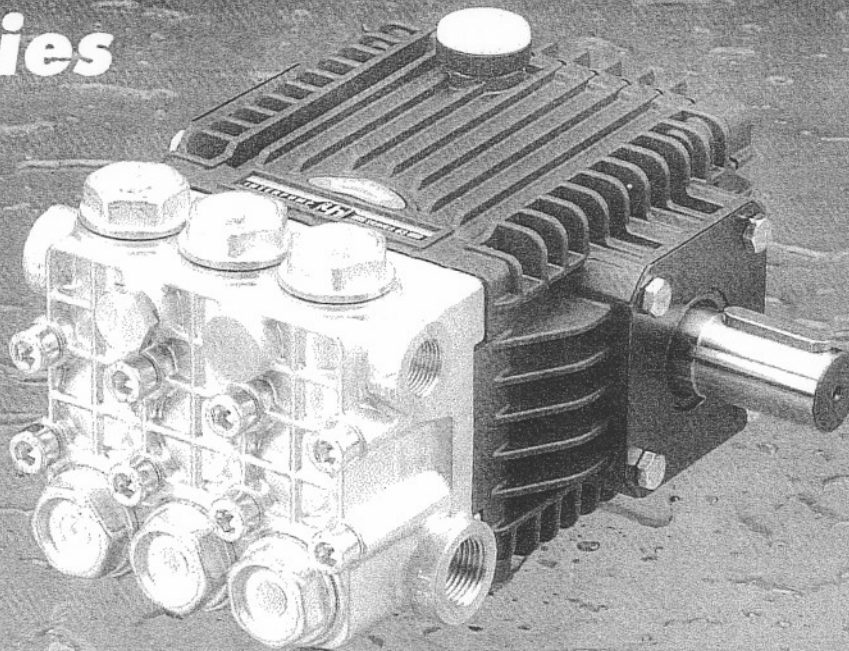


# INTERPUMP GROUP

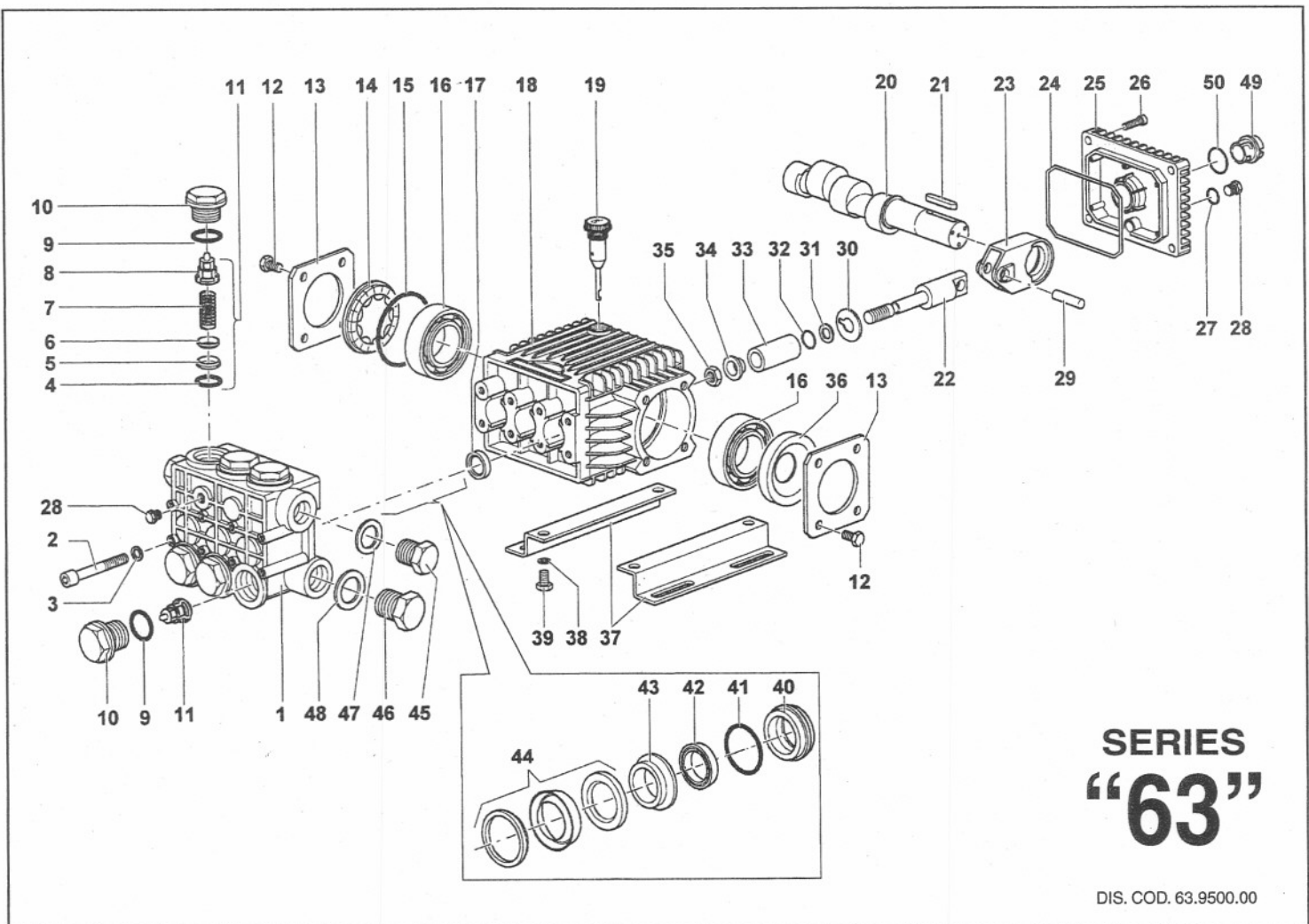
INTERNATIONAL TECHNICAL COMPANY



## 63 series



Pump type	Volume Leistung Debit Caudal Portata		Pressure Druck Pressione Presion Pressione		r.p.m. u.p.m. t/min. r/min. g/min.	Required Leistung Puissance Potencia Potenza	Weight Poids Gewicht Peso Peso kg	
	l/min	G.P.M. (USA)	bar	p.s.i.			Hp / kW	Standard version
EL2007	7	1.85	200	2900	1450	3.7 / 2.72	8.15	9.15
EL2009	9	2.38	200	2900		4.7 / 3.45	8.15	9.15
EL1411	11	2.90	140	2030		4 / 2.94	8.05	9.05
EL1413	13	3.43	140	2030		4.8 / 3.52	8.05	9.05
EL1714	14	3.69	170	2465		6,2 / 4.56	8.05	9.05
UL2009	9	2.38	200	2900	1750	4.7 / 3.45	8.15	9.15
UL2011	11	2.90	200	2900		5.8 / 4.26	8.15	9.15
UL1413	13	3.43	138	2000		4.7 / 3.45	8.05	9.05
UL1415	15,2	4.02	138	2000		5.5 / 4.04	8.05	9.05
EH2009	9	2.38	200	2900	2800	4.7 / 3.45	8.15	9.15
EH2011	11	2.90	200	2900		5.8 / 4.26	8.15	9.15
EH1413	13	3.43	140	2030		4.8 / 3.52	8.15	9.15
EH1416	16	4.22	140	2030		5.8 / 4.26	8.15	9.15
UH2008	8	2.11	200	2900	3400	4.2 / 3.08	8.15	9.15
UH2011	11	2.90	200	2900		5.8 / 4.26	8.15	9.15
UH2013	13	3.43	200	2900		6.8 / 5	8.15	9.15
UH2016	16	4.22	200	2900		8.3 / 6.10	8.15	9.15



# SERIES "63"

DIS. COD. 63.9500.00

KIT N.	KIT 123	KIT 124	KIT 159
Position included	4-5-6 7-8 (11)	9-10	17
Posizioni incluse			
N. pcs.	6	6	3

PISTON -PISTONE Ø 15				PISTON -PISTONE Ø 18			
MODEL: EL2007 EL2009 UL2009 UL2011 EH1413 EH1416 EH2009 EH2011 UH2008 UH2011 UH2013 UH2016				MODEL: EL1411 EL1413 EL1714 UL1413 UL1415			
KIT 160	KIT 162	KIT 164	KIT 166	KIT 161	KIT 163	KIT 165	KIT 167
42-44	40	43	40-41 42-43 44	42-44	40	43	40-41 42-43 44
3	3	3	1	3	3	3	1

**STANDARD  
VERSION  
-M-**

EL1411	EL1413	EL1714	EL2007	EL2009
UL1413	UL1415	UL2009	UL2011	
EH1413	EH1416	EH2009	EH2011	
UH2008	UH2011	UH2013	UH2016	

POS.	CODE CODICE	DESCRIPTION DESCRIZIONE	N. PCS.
1	63.1200.41	Testata pompa (pistone Ø 15)	1
	63.1203.41	Testata pompa (pistone Ø 18)	1
2	99.3192.00	Vite M 8x65 UNI 5931 tropicalizzata	8
3	96.7014.00	Rosetta Ø 8 Schnorr	8
4	90.3841.00	OR Ø 17,13x2,62	KIT 123 6
5	36.2003.66	Sede valvola	KIT 123 6
6	36.2001.76	Valvola	KIT 123 6
7	94.7376.00	Molla Ø 9,4x14,8	KIT 123 6
8	36.2025.51	Guida valvola	KIT 123 6
9	90.3847.00	OR Ø 20,24x2,62	KIT 124 6
10	98.2226.00	Tappo M 24x1,5x17	KIT 124 6
11	36.7115.01	Gruppo valvola	KIT 123 6
12	99.1807.00	Vite M 6x10 UNI 5739 zincata	8
13	50.1500.74	Coperchio carter	2
14	44.2118.01	Distanziale con indicatore	1
15	90.4097.00	OR Ø 55,56x3,53	1
16	91.8328.00	Cuscinetto a sfere 6305	2
17	90.1595.00	Anello radiale Ø 18x26x6	KIT 159 3
18	63.0100.22	Carter	1
19	98.2103.00	Tappo carico olio G 3/8	1
	63.0202.65	Albero UH2008	1
	63.0205.65	Albero EH2009 UH2011	1
	63.0208.65	Albero EH2011 UH2013	1
20	63.0212.65	Albero EL2007 EL1411 UL2009 UL1413 EH1413 UH2016	1
	63.0216.65	Albero EL2009 EL1413 UL2011 UL1415 EH1416	1
	63.0218.65	Albero EL1714	1
21	91.4892.00	Linguetta	1
23	63.0500.66	Guida pistone	3
23	63.0300.22	Biella	3
24	90.3920.00	OR Ø 101,27x2,62	1
25	63.1600.22	Coperchio posteriore	1

POS.	CODE CODICE	DESCRIPTION DESCRIZIONE	N. PCS.
26	99.1837.00	Vite M 6x14 UNI 5931 zincata	4
27	90.3585.00	OR Ø 10,82x1,78	1
28	98.2041.00	Tappo G 1/4x9	2
29	97.7335.00	Spinotto Ø 9x27,5	3
30	96.7075.00	Rosetta Ø 9x25x0,5	3
31	90.5022.00	Anello per OR	3
32	90.3573.00	OR 5,28x1,78	3
	52.0400.09	Pistone Ø 15	3
33	44.0401.09	Pistone Ø 18	3
34	44.2115.70	Rosetta Ø 8 con collare	3
35	92.2216.00	Dado M 8 -Inox-	3
36	90.1641.00	Anello radiale Ø 25x62x10	1
37	50.2000.74	Piedino	2
38	96.7016.00	Rosetta Ø 8 UNI 1751	4
39	99.3037.00	Vite M 8x16 UNI 5739 zincata	4
	63.0800.70	Anello di fondo Ø 15	KIT 162-166 3
	63.0801.70	Anello di fondo Ø 18	KIT 163-167 3
41	90.3608.00	OR Ø 28,3x1,78	KIT 166-167 3
42	90.2608.00	Anello di tenuta Ø 15 L.P. seal	KIT 160-166 3
	90.2650.00	Anello di tenuta Ø 18 L.P. seal	KIT 161-167 3
43	63.2160.70	Anello intermedio Ø 15	KIT 164-166 3
	63.2161.70	Anello intermedio Ø 18	KIT 165-167 3
44	90.2612.00	Anello di tenuta Ø 15 H.P. seal	KIT 160-166 3
	90.2654.00	Anello di tenuta Ø 18 H.P. seal	KIT 161-167 3
45	98.2100.00	Tappo G 3/8x13	1
46	98.2176.00	Tappo G 1/2x10	1
47	96.7380.00	Rosetta Ø 17,5x23x1,5	1
48	96.7514.00	Rosetta Ø 21,5x27x1,5	1
49	63.2100.51	Spia livello olio	1
50	90.4051.00	OR Ø 26,58x3,53	1

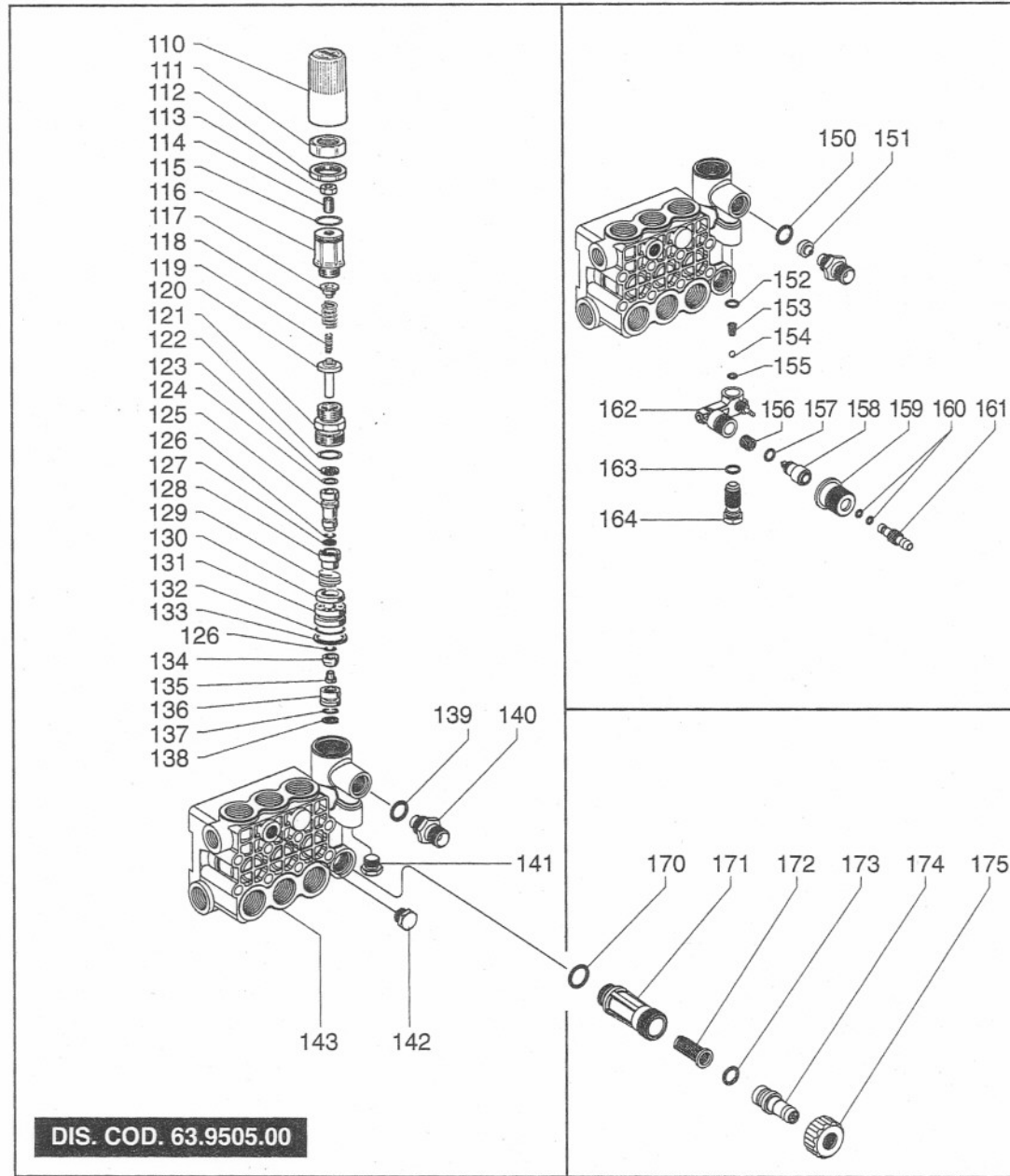
## VERSION VH

VERSION WITH BUILT-IN  
AUT. UNLOADER

AUSFÜHRUNG MIT  
EINGEBAUTEM AUT.  
DRUCKREGULIERVENTIL

VERSION AVEC  
REGULATEUR AUT.  
DE PRESSION INCORPORÉ

VERSIONE CON VALVOLA  
DI REGOLAZIONE AUT.  
INCORPORATA



# SERIES "63"

KIT N.	KIT 94	KIT 137
Position included	139-150	123-124-125-126
	152-153	127-128-129-130
	154-155	131-132-133-134
Posizioni include	156-157	135-136-137-138
	160-163	
N. pcs.	1	1

POS.	CODE CODICE	DESCRIPTION DESCRIZIONE	N. PCS.
110	36.3187.51	Pomolo	1
111	36.3186.70	Ghiera per registro pressione	1
112	92.2935.00	Dado M28x1,5	1
113	92.2218.00	Dado M8 UNI 5589	1
114	99.3054.00	Vite M8x20 UNI 5923	1
115	90.3598.00	OR Ø 20,35 x 1,78	1
116	36.3185.70	Registro pressione	1
117	36.3169.70	Piattello molla	1
118	94.7436.00	Molla Ø 15x35	1
119	94.7345.00	Molla Ø 7,6x29	1
120	36.3233.70	Piattello inferiore molla	1
121	36.3228.70	Boccola di guida	1
122	90.3857.00	OR Ø 23,81x2,62	1
123	90.5052.00	Anello per OR	1
124	90.3820.00	OR Ø 9,13x2,62 - spec.	1
125	36.3234.70	Pistoncino di comando	1
126	90.3575.00	OR Ø 6,75x1,78 - spec.	2
127	90.5025.00	Anello per OR	1
128	36.3230.70	Distanziale	1
129	94.7485.00	Molla Ø 18,5x11	1
130	36.3231.51	Valvola	1
131	36.3229.70	Guida valvola	1
132	90.3600.00	OR Ø 21,95x1,78	1
133	90.5144.00	Anello per OR	1
134	36.3190.66	Valvola sferica	1
135	99.1509.00	Vite M5x7,5	1
136	36.3164.66	Sede valvola	1
137	90.3822.00	OR Ø 9,92x2,62 - spec.	1
138	90.5065.00	Anello per OR	1
139	90.3832.00	OR Ø 13,95x2,62 - spec.	1
140	10.0078.70	Nipplo G3/8 con Ø 3	1
	10.0147.70	Nipplo M22x1,5 con Ø 3	1

POS.	CODE CODICE	DESCRIPTION DESCRIZIONE	N. PCS.
141	98.2057.00	Tappo M14x1,5	1
142	98.2041.00	Tappo G 1/4x9	1
143	63.1201.41	Testata (pistone Ø 15)	1
	63.1204.41	Testata (pistone Ø 18)	1

POS.	CODE CODICE	OPTIONALS	N. PCS.
150	90.3822.00	OR Ø 9,92x2,62 - spec.	KIT 94 1
	10.0151.66	Ugello - Nozzle Ø 2 (8-11 l./min.)	1
151	10.0076.66	Ugello - Nozzle Ø 2,2 (12-17 l./min.)	1
152	90.3582.00	OR Ø 9,25x1,78	KIT 94 1
153	94.8217.00	Molla conica Ø 4,3/7,3x11	KIT 94 1
154	97.4782.00	Sfera Ø 7/32"	KIT 94 1
155	90.3572.00	OR Ø 5,28x1,78 - spec.	KIT 94 1
156	94.7383.00	Molla Ø 9,75x10	KIT 94 1
157	90.3580.00	OR Ø 8,73x1,78 - spec.	KIT 94 1
158	36.2564.70	Otturatore	1
159	36.2565.51	Pomolo	1
160	90.3570.00	OR Ø 4,48x1,78	KIT 94 2
161	36.2566.70	Innesto portagomma	1
162	36.3181.51	Corpo dosatore	1
163	90.3585.00	OR Ø 10,82x1,78	KIT 94 1
164	36.2563.70	Sede valvola	1
170	90.3841.00	OR Ø 17,13x2,62	1
171	36.3182.51	Nipplo di aspirazione G3/4	1
172	92.8925.00	Filtro	1
173	90.3828.00	OR Ø 12,37x2,62	1
174	36.2569.51	Portagomma aspirazione	1
175	92.9828.00	Ghiera G3/4	1



## VERSION VK

VERSION WITH BUILT-IN  
AUT. UNLOADER

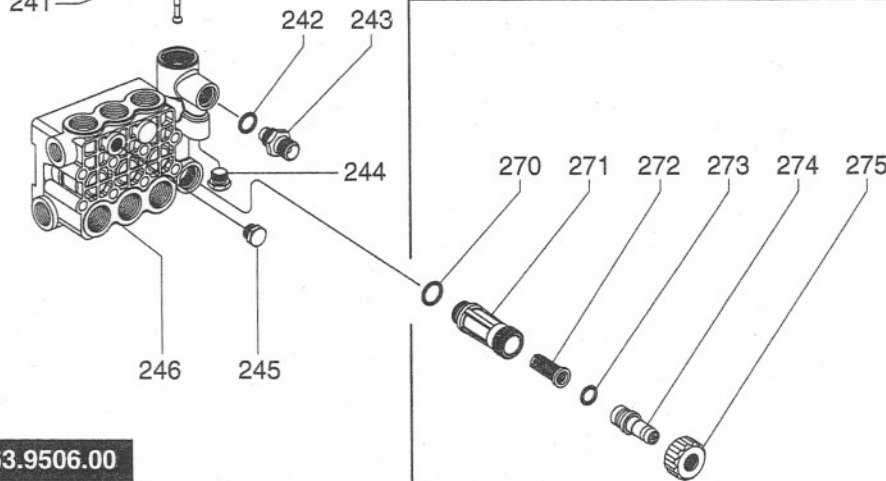
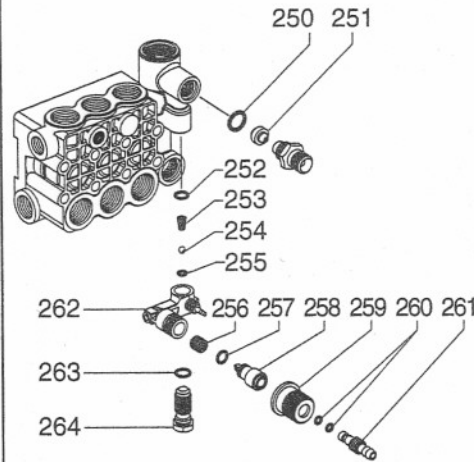
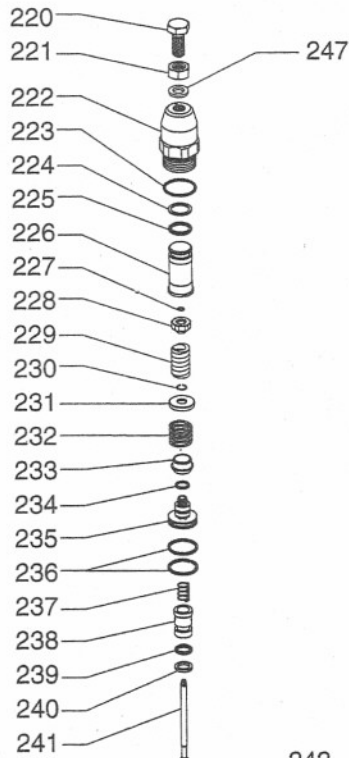
AUSFÜHRUNG MIT  
EINGEBAUTEM AUT.  
DRUCKREGULIERVENTIL

VERSION AVEC  
REGULATEUR AUT.  
DE PRESSION INCORPORÉ

VERSIONE CON VALVOLA  
DI REGOLAZIONE AUT.  
INCORPORATA

# SERIES "63"

KIT N.	KIT 94	KIT 177
Position included	242-250 252-253 254-255	227-228-229 230-231-232 233-234-235
Posizioni incluse	256-257 260-263	236-237-238 239-240-241
N. pcs.	1	1

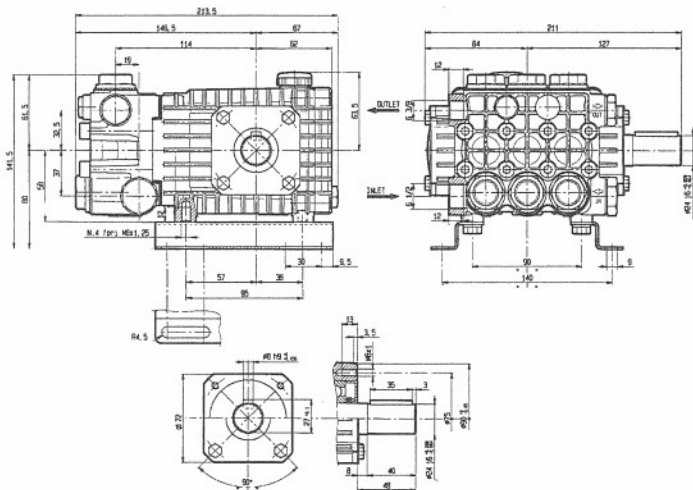


DIS. COD. 63.9506.00

POS.	CODE CODICE	DESCRIPTIONE DESCRIZIONE	N. PCS.	POS.	CODE CODICE	OPTIONALS	N. PCS.
220	99.3663.00	Vite TE M10x1,25x25 UNI 5740	1	250	90.3822.00	OR Ø 9,92x2,62 - spec.	KIT 94 1
221	92.2368.00	Dado M10x1,25-8 UNI 5589	1	251	10.0151.66	Ugello - Nozzle Ø 2 (8-11 l./min.)	1
222	36.3270.70	Corpo superiore	1		10.0076.66	Ugello - Nozzle Ø 2,2 (12-17 l./min.)	1
223	90.3604.00	OR Ø 25,12x1,78	1	252	90.3582.00	OR Ø 9,25x1,78	KIT 94 1
224	90.5090.00	An. Anties. 15,8x20x1,3	1	253	94.8217.00	Molla conica Ø 4,3/7,3x11	KIT 94 1
225	90.3835.00	OR Ø 15,08x2,62	1	254	97.4782.00	Sfera Ø 7/32"	KIT 94 1
226	36.3271.70	Fine corsa	1	255	90.3572.00	OR Ø 5,28x1,78 - spec.	KIT 94 1
227	90.0059.00	Anello di arresto UNI 7433-A-5	KIT 177 1	256	94.7383.00	Molla Ø 9,75x10	KIT 94 1
228	36.3274.70	Piattello molla	KIT 177 1	257	90.3580.00	OR Ø 8,73x1,78 - spec.	KIT 94 1
229	94.7408.00	Molla DM. 12,5x26	KIT 177 1	258	36.2564.70	Otturatore	1
230	90.0062.00	Anello di arresto UNI 7433-A-8	KIT 177 1	259	36.2565.51	Pomolo	1
231	36.3273.70	Piattello molla	KIT 177 1	260	90.3570.00	OR Ø 4,48x1,78	KIT 94 2
232	94.7480.00	Molla DM 18,2x16,5	KIT 177 1	261	36.2566.70	Innesto portagomma	1
233	36.3277.56	Otturatore	KIT 177 1	262	36.3181.51	Corpo dosatore	1
234	90.3581.00	OR Ø 8,73x1,78	KIT 177 1	263	90.3585.00	OR Ø 10,82x1,78	KIT 94 1
235	36.3272.70	Pistoncino di comando	KIT 177 1	264	36.2563.70	Sede valvola	1
236	92.7710.00	Fascia elastica Ø 25	KIT 177 2				
237	94.7372.00	Molla DM. 9,3x15	KIT 177 1	270	90.3841.00	OR Ø 17,13x2,62	1
238	36.3276.66	Sede valvola	KIT 177 1	271	36.3182.51	Nipplo di aspirazione G3/4	1
239	90.3823.00	OR Ø 9,92x2,62	KIT 177 1	272	92.8925.00	Filtro	1
240	90.5065.00	An. Anties. 10,6x15x2 OR 112	KIT 177 1	273	90.3828.00	OR Ø 12,37x2,62	1
241	36.3275.66	Asta valvola	KIT 177 1	274	36.2569.51	Portagomma aspirazione	1
242	90.3832.00	OR Ø 13,95x2,62 - spec.	KIT 94 1	275	92.9828.00	Ghiera G3/4	1
243	10.0078.70	Nipplo G3/8 con Ø 3	1				
244	10.0147.70	Nipplo M22x1,5 con Ø 3	1				
245	98.2057.00	Tappo M14x1,5	1				
246	98.2041.00	Tappo G 1/4x9	1				
	63.1201.41	Testata (pistone Ø 15)	1				
	63.1204.41	Testata (pistone Ø 18)	1				
247	96.7103.00	Rosetta Ø 10,5x18x2	1				

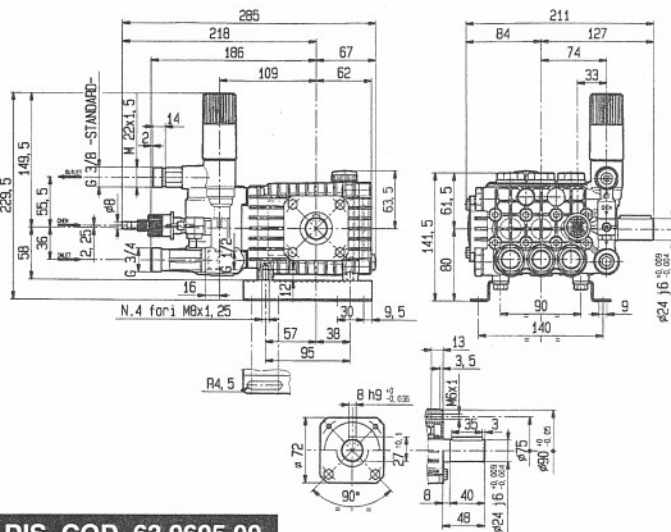
# OVERALL DIMENSIONS • ÄUSSERE ABMESSUNGEN • DIMENSIONS TOTALES DIMENSIONES TOTALES • DIMENSIONI D'INGOMBRO

## STANDARD VERSION M



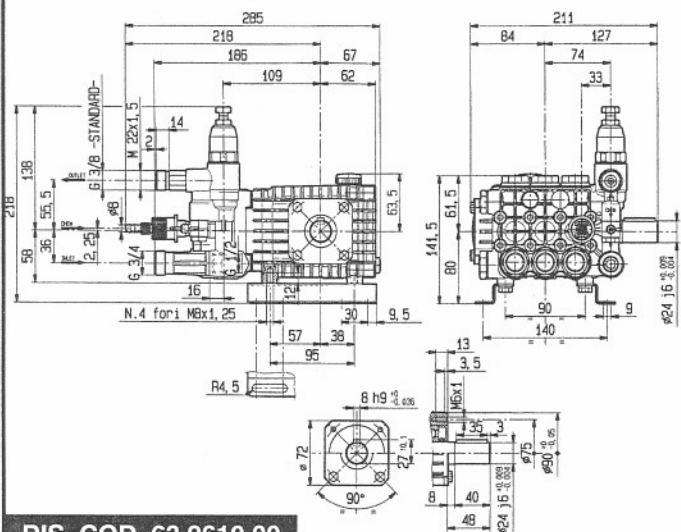
DIS. COD. 63.9600.00

## VERSION MVH



DIS. COD. 63.9605.00

## VERSION MVK



DIS. COD. 63.9610.00

- LUBRICATION:** Check the oil from time. Change the oil after 50 Hrs. operation and then after every 500 Hrs. We recommend INTERPUMP OIL X-9.9. (SAE 15W40 Mineral) - OIL CAPACITY 0,36
- SCHMIERUNG:** Der Ölstand ist in regelmässigen Abständen zu kontrollieren. Der Ölwechsel muss nach den ersten 50 Arbeitsstunden, in der Folge alle 500 Stunden, vorgenommen werden. Es sollte INTERPUMP ÖL X-9.9 (SAE 15W40 Mineral) verwendet werden - Ölinhalt 0,36 ℓ.
- LUBRIFICATION:** Contrôler régulièrement le niveau d'huile. La première vidange doit être faite au bout de 50 heures maximum, ensuite faire une vidange toutes les 500 heures, on conseille huile INTERPUMP X-9.9. (SAE 15W40 Minérale) - CAPACITÉ D'HUILE 0,36 ℓ.
- LUBRIFICACIÓN:** Controlar periódicamente el nivel del aceite. El cambio del aceite, al comienzo, hay que hacerlo después de 50 horas de trabajo, luego cada 500 horas. Se aconseja aceite INTERPUMP X-9.9. (SAE 15W40 Mineral) - CAPACIDAD 0,36 ℓ.
- LUBRIFICAZIONE:** Controllare periodicamente il livello dell'olio. Il cambio dell'olio deve essere fatto inizialmente dopo 50 ore di lavoro, successivamente ogni 500 ore. Si consiglia olio INTERPUMP X-9.9. (SAE 15W40 Minerale) - CAPACITÀ OLIO 0,36 ℓ.



## INTERPUMP GROUP

VIA E. FERMI, 25  
42040 S. ILARIO - REGGIO EMILIA (ITALY)  
TEL. +39 - 0522 - 904311 • TELEFAX + 39 - 0522 - 904444  
E-mail: info@interpumpgroup.it  
http://www.interpumpgroup.it